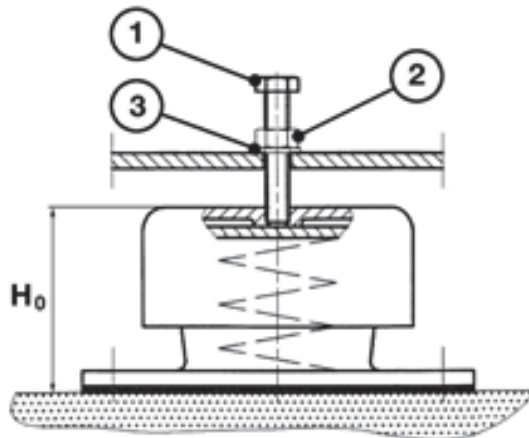


Elastic mount, LS 6300

Height setting

The unit stands over the foundation on spacers.

- The levelling screws 1 of all bearings are screwed onto the pressure plate until contact, see figure A 1. The unit is lowered onto the spring elements, see figure A 2.
- Screw levelling screws 1 alternately in equal steps of 2 -3 turns. Figure A 4 shows the correct sequence.
- The bearings are set to the original height H_0 with the levelling screw 1 and then secured with nuts 2, see figure A 3. The original height H_0 should not be exceeded when doing this. If required the bearing movement can be limited by one more turns of the levelling screw 1.

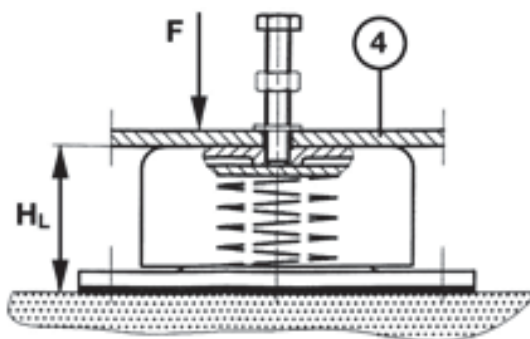


A 1 82656-0 Bearing unloaded



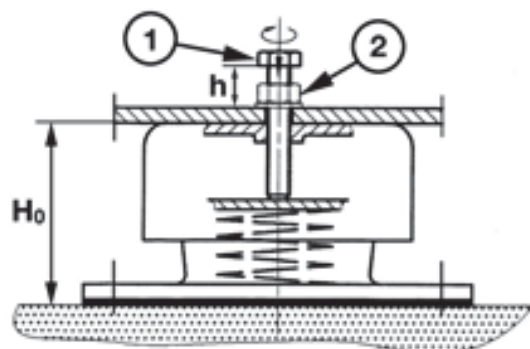
The height H_0 is to be taken from the appropriate unit drawing.

Components



A 2 82658-0 Initial assembly, loaded

- 1 Screw M 20 x 80 DIN 933
- 2 Nut M 20 DIN 934
- 3 Disc 21 DIN 125
- 4 Base frame
- 5 Part number plate
- H0 Bearing height, unloaded
- HL Bearing height, loaded
- X Delivery height 130 mm



A 3 82659-0 Work height to be set

Setting sequence

Figure A 4, 20 bearings

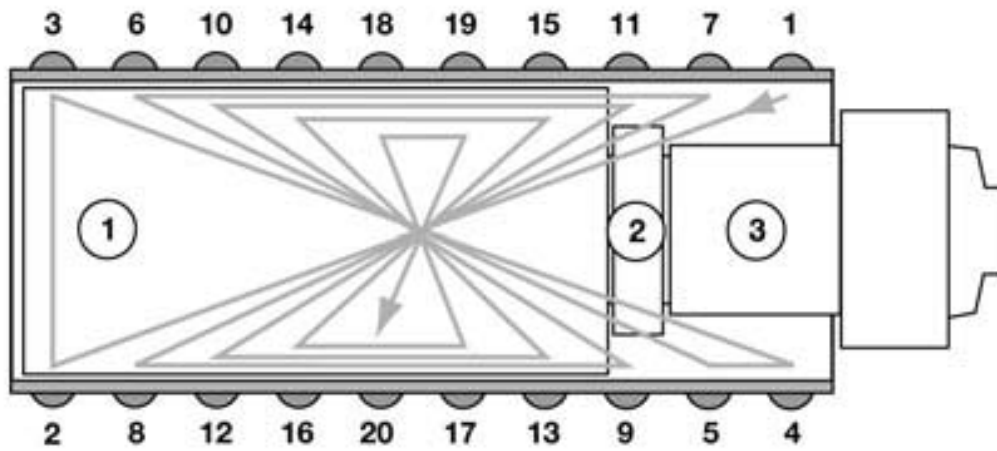
Figure A 5, 18 bearings

Figure A 6, 16 bearings

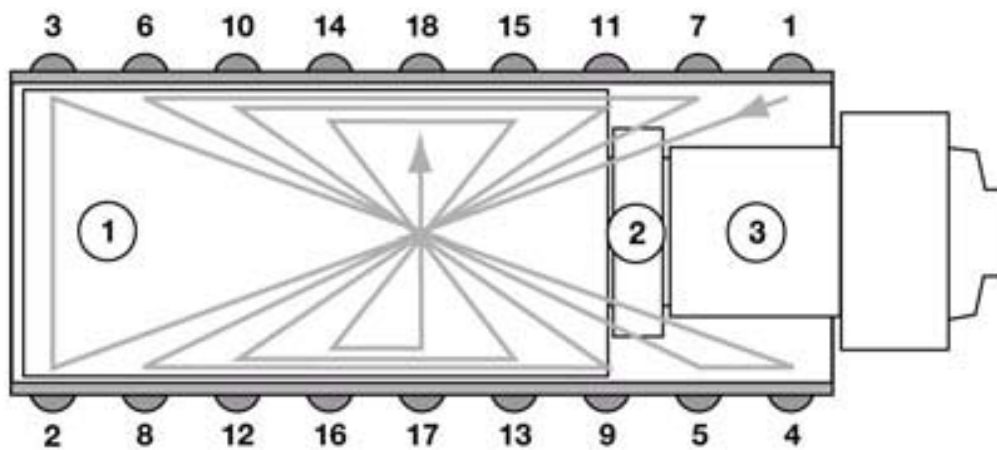
Figure A 7, 14 bearings

Items

- 1 Engine
- 2 Coupling generator



A 4 82710-1 Setting sequence, 20 bearings



A 5 82715-0 Setting sequence, 18 bearings